

Arbutus Rd between Finnerty Rd and Hobbs St

March 03, 2020 To March 05, 2020



The data presented here is for information purposes only and should not be considered authoritative for construction, geotechnical, engineering, navigational, legal, or other site-specific uses. The information shared is owned by the Transportation Division of the Engineering Department at the District of Saanich. Accuracy is not guaranteed.

Start Date: 2-Mar-20
 Start Time: 0:04
 Station ID: C0002-03

Location 1: Arbutus Rd between Finnerty Rd and Hobbs St

Note: No data available on Mar 5 from 9:15 to 10:45, likely due to vehicle parked on tube.

DATE:	March 2, 2020		March 3, 2020		March 4, 2020		March 5, 2020		March 6, 2020		WK AVG		WK AVG	HOURLY
Time:	MON		TUE		WED		THURS		FRI		NB	SB	CH 1+2	%
	NB	SB	NB	SB	NB	SB	NB	SB	NB	SB	NB	SB		
12-1 AM			9	4	7	5	7	3			8	4	12	0.2%
1-2 AM			2	1	4	3	4	4			3	3	6	0.1%
2-3 AM			2	2	4	1	2	2			3	2	4	0.1%
3-4 AM			1	2	1	2	1	0			1	1	2	0.0%
4-5 AM			11	4	7	3	8	4			9	4	12	0.3%
5-6 AM			13	14	13	13	14	13			13	13	27	0.6%
6-7 AM			34	23	44	31	50	41			43	32	74	1.6%
7-8 AM			116	153	106	150	115	146			112	150	262	5.5%
8-9 AM			271	319	270	334	280	350			274	334	608	12.8%
9-10 AM			159	160	151	166	71	74			127	133	260	5.5%
10-11 AM			145	124	176	149	44	42			122	105	227	4.8%
11-12 PM			139	144	184	181	174	147			166	157	323	6.8%
12-1 PM			178	158	167	154	185	154			177	155	332	7.0%
1-2 PM			133	125	176	165	167	144			159	145	303	6.4%
2-3 PM			186	178	205	203	157	187			183	189	372	7.9%
3-4 PM			233	173	297	184	240	183			257	180	437	9.2%
4-5 PM			253	178	277	190	238	186			256	185	441	9.3%
5-6 PM			200	169	206	162	169	160			192	164	355	7.5%
6-7 PM			100	120	103	113	95	110			99	114	214	4.5%
7-8 PM			72	62	62	68	86	83			73	71	144	3.0%
8-9 PM			59	57	72	69	58	60			63	62	125	2.6%
9-10 PM			42	49	39	56	59	59			47	55	101	2.1%
10-11 PM			25	26	29	33	25	35			26	31	58	1.2%
11-12 AM			20	17	21	21	13	14			18	17	35	0.7%
LANES			2403	2262	2621	2456	2262	2201			2429	2306	4735	100.0%
TOTAL			4665		5077		4463				4740			
	MON		TUE		WED		THURS		FRI		WK AVG			

PEAK HOUR					TOTAL VEHICALS-PEAK PERIODS		2 HOUR PEAK INTERVALS				
MAX. 7 - 9 am PEAK HOUR	608	⇒	12.8%	between 8-9 AM	2321	⇒	6 HR TOTAL	2 HR AM (7 - 9 AM)			
MAX. 7 - 11 am PEAK HOUR	608	⇒	12.8%	between 8-9 AM	1666	⇒	4 HR TOTAL	VEH / HR	VEH / 2HR	2 HR %	
MAX. 11 am - 1 pm PEAK HOUR	332	⇒	7.0%	between 12-1 PM				7-8 AM	262	870	18.4%
MAX. 11 am - 3 pm PEAK HOUR	372	⇒	7.9%	between 2-3 PM				8-9 AM	608		
MAX. 4 - 6 pm PEAK HOUR	441	⇒	9.3%	between 4-5 PM				2 HR NOON (11 - 1 PM)			
MAX. 3 - 6 pm PEAK HOUR	441	⇒	9.3%	between 4-5 PM				VEH / HR	VEH / 2HR	2 HR %	
								11-12 PM	323	655	13.8%
								12-1 PM	332		
								2 HR PM (4 - 6 PM)			
								VEH / HR	VEH / 2HR	2 HR %	
								4-5 PM	441	796	16.8%
								5-6 PM	355		

Arbutus Rd between Finnerty Rd and Hobbs St

Northbound

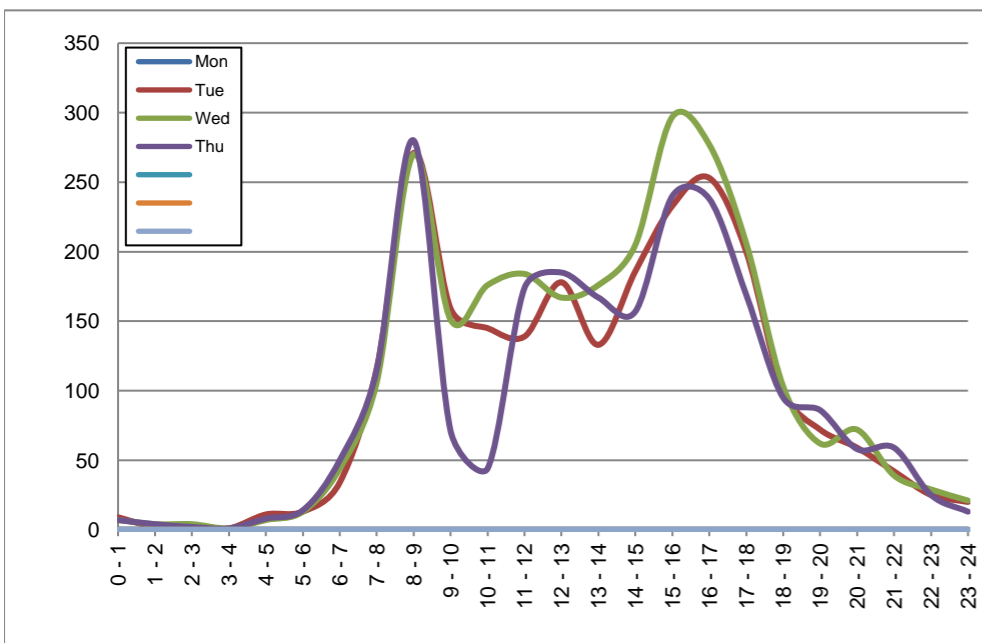
March 2, 2020 to March 5, 2020

Hourly Volumes

Time Period	Mon	Tue	Wed	Thu			
	Mar 2	Mar 3	Mar 4	Mar 5			
0 - 1		9	7	7			
1 - 2		2	4	4			
2 - 3		2	4	2			
3 - 4		1	1	1			
4 - 5		11	7	8			
5 - 6		13	13	14			
6 - 7		34	44	50			
7 - 8		116	106	115			
8 - 9		271	270	280			
9 - 10		159	151	71			
10 - 11		145	176	44			
11 - 12		139	184	174			
12 - 13		178	167	185			
13 - 14		133	176	167			
14 - 15		186	205	157			
15 - 16		233	297	240			
16 - 17		253	277	238			
17 - 18		200	206	169			
18 - 19		100	103	95			
19 - 20		72	62	86			
20 - 21		59	72	58			
21 - 22		42	39	59			
22 - 23		25	29	25			
23 - 24		20	21	13			
Day Total		2403	2621	2262			

15-Minute Volumes

Time Start	Mon	Tue	Wed	Thu				Time Start	Mon	Tue	Wed	Thu			
	Mar 2	Mar 3	Mar 4	Mar 5					Mar 2	Mar 3	Mar 4	Mar 5			
0:00		2	2	2				12:00		54	55	43			
0:15		3	4	3				12:15		25	35	44			
0:30		1	1	1				12:30		42	44	46			
0:45		3	0	1				12:45		57	33	52			
1:00		1	0	4				13:00		33	38	37			
1:15		0	3	0				13:15		33	44	41			
1:30		0	1	0				13:30		41	50	41			
1:45		1	0	0				13:45		26	44	48			
2:00		1	0	0				14:00		42	39	36			
2:15		0	1	0				14:15		35	37	37			
2:30		0	3	0				14:30		41	50	31			
2:45		1	0	2				14:45		68	79	53			
3:00		1	0	0				15:00		92	86	80			
3:15		0	1	1				15:15		36	62	51			
3:30		0	0	0				15:30		53	72	63			
3:45		0	0	0				15:45		52	77	46			
4:00		1	0	1				16:00		68	63	65			
4:15		2	0	1				16:15		57	71	58			
4:30		3	2	1				16:30		74	78	67			
4:45		5	5	5				16:45		54	65	48			
5:00		3	1	2				17:00		59	72	53			
5:15		3	5	2				17:15		54	44	38			
5:30		2	3	1				17:30		40	48	40			
5:45		5	4	9				17:45		47	42	38			
6:00		4	5	7				18:00		23	28	27			
6:15		3	6	7				18:15		26	36	20			
6:30		10	18	20				18:30		27	22	27			
6:45		17	15	16				18:45		24	17	21			
7:00		19	11	17				19:00		23	21	22			
7:15		29	20	26				19:15		22	14	33			
7:30		27	31	30				19:30		13	13	13			
7:45		41	44	42				19:45		14	14	18			
8:00		41	47	55				20:00		18	23	15			
8:15		65	73	82				20:15		12	18	12			
8:30		83	70	61				20:30		17	19	15			
8:45		82	80	82				20:45		12	12	16			
9:00		45	48	46				21:00		12	9	20			
9:15		39	38	25				21:15		15	12	16			
9:30		33	37	0				21:30		8	15	12			
9:45		42	28	0				21:45		7	3	11			
10:00		34	32	0				22:00		4	5	7			
10:15		45	41	0				22:15		9	5	7			
10:30		38	54	6				22:30		6	10	7			
10:45		28	49	38				22:45		6	9	4			
11:00		40	47	46				23:00		8	4	2			
11:15		33	41	38				23:15		4	9	6			
11:30		30	43	52				23:30		3	3	1			
11:45		36	53	38				23:45		5	5	4			



Site notes:

Arbutus Rd between Finnerty Rd and Hobbs St

Southbound

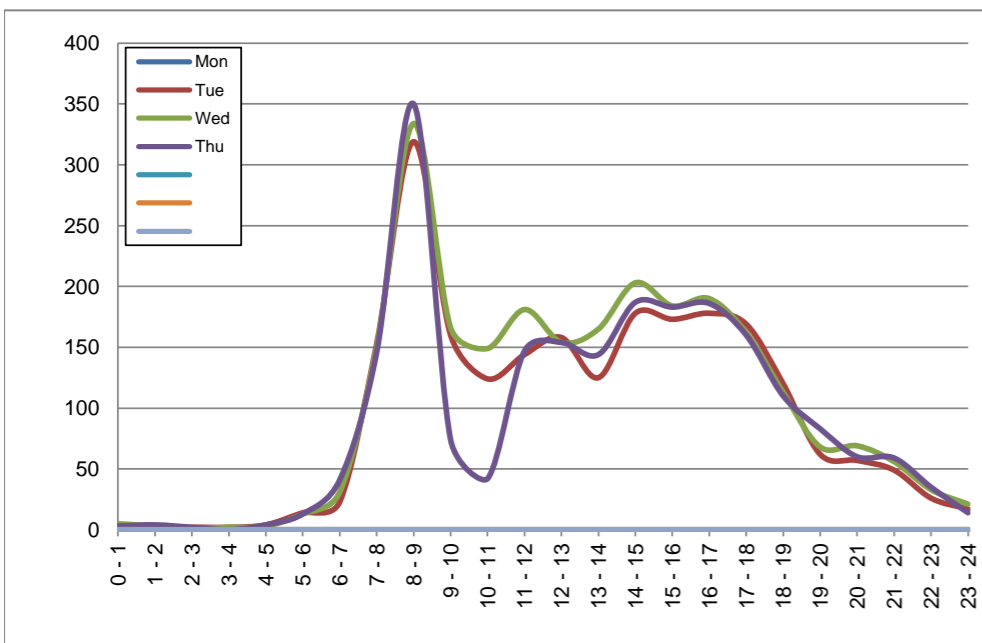
March 2, 2020 to March 5, 2020

Hourly Volumes

Time Period	Mon Mar 2	Tue Mar 3	Wed Mar 4	Thu Mar 5
0 - 1		4	5	3
1 - 2		1	3	4
2 - 3		2	1	2
3 - 4		2	2	0
4 - 5		4	3	4
5 - 6		14	13	13
6 - 7		23	31	41
7 - 8		153	150	146
8 - 9		319	334	350
9 - 10		160	166	74
10 - 11		124	149	42
11 - 12		144	181	147
12 - 13		158	154	154
13 - 14		125	165	144
14 - 15		178	203	187
15 - 16		173	184	183
16 - 17		178	190	186
17 - 18		169	162	160
18 - 19		120	113	110
19 - 20		62	68	83
20 - 21		57	69	60
21 - 22		49	56	59
22 - 23		26	33	35
23 - 24		17	21	14
Day Total		2262	2456	2201

15-Minute Volumes

Time Start	Mon Mar 2	Tue Mar 3	Wed Mar 4	Thu Mar 5	
0:00		0	2	2	
0:15		2	2	1	
0:30		1	0	0	
0:45		1	1	0	
1:00		1	0	2	
1:15		0	3	1	
1:30		0	0	1	
1:45		0	0	0	
2:00		0	0	0	
2:15		0	0	1	
2:30		0	0	1	
2:45		2	1	0	
3:00		0	1	0	
3:15		0	0	0	
3:30		1	1	0	
3:45		1	0	0	
4:00		3	1	0	
4:15		1	2	1	
4:30		0	0	2	
4:45		0	0	1	
5:00		2	0	0	
5:15		1	3	3	
5:30		6	5	6	
5:45		5	5	4	
6:00		4	4	6	
6:15		4	4	11	
6:30		9	11	8	
6:45		6	12	16	
7:00		30	17	15	
7:15		28	37	35	
7:30		42	38	47	
7:45		53	58	49	
8:00		73	74	78	
8:15		64	82	71	
8:30		114	112	115	
8:45		68	66	86	
9:00		45	50	44	
9:15		49	51	30	
9:30		28	23	0	
9:45		38	42	0	
10:00		29	41	0	
10:15		30	45	0	
10:30		35	22	7	
10:45		30	41	35	
11:00		38	42	35	
11:15		30	54	41	
11:30		41	45	31	
11:45		35	40	40	
12:00			31	38	30
12:15			35	36	38
12:30			51	40	42
12:45			41	40	44
13:00			34	49	37
13:15			27	34	28
13:30			32	45	36
13:45			32	37	43
14:00			25	43	41
14:15			34	41	32
14:30			55	54	51
14:45			64	65	63
15:00			44	48	49
15:15			62	42	49
15:30			32	51	43
15:45			35	43	42
16:00			38	51	47
16:15			43	42	46
16:30			54	48	47
16:45			43	49	46
17:00			61	42	43
17:15			46	51	44
17:30			33	35	33
17:45			29	34	40
18:00			39	28	29
18:15			36	32	38
18:30			23	24	20
18:45			22	29	23
19:00			15	21	17
19:15			21	19	18
19:30			13	18	24
19:45			13	10	24
20:00			12	20	18
20:15			17	21	15
20:30			16	14	11
20:45			12	14	16
21:00			13	20	20
21:15			15	14	13
21:30			7	10	12
21:45			14	12	14
22:00			8	9	11
22:15			10	8	7
22:30			5	9	11
22:45			3	7	6
23:00			2	5	3
23:15			6	9	3
23:30			5	6	5
23:45			4	1	3



Site notes:

Vehicle Speed Summary

Saanich Engineering Department

Count Id: C0002-03

Filename: Arbutus Rd between Finnerty Rd and Hobbs St-Mar-2020.xlsm

Location: Arbutus Rd between Finnerty Rd and Hobbs St

Note: No data available on Mar 5 from 9:15 to 10:45, likely due to vehicle parked o

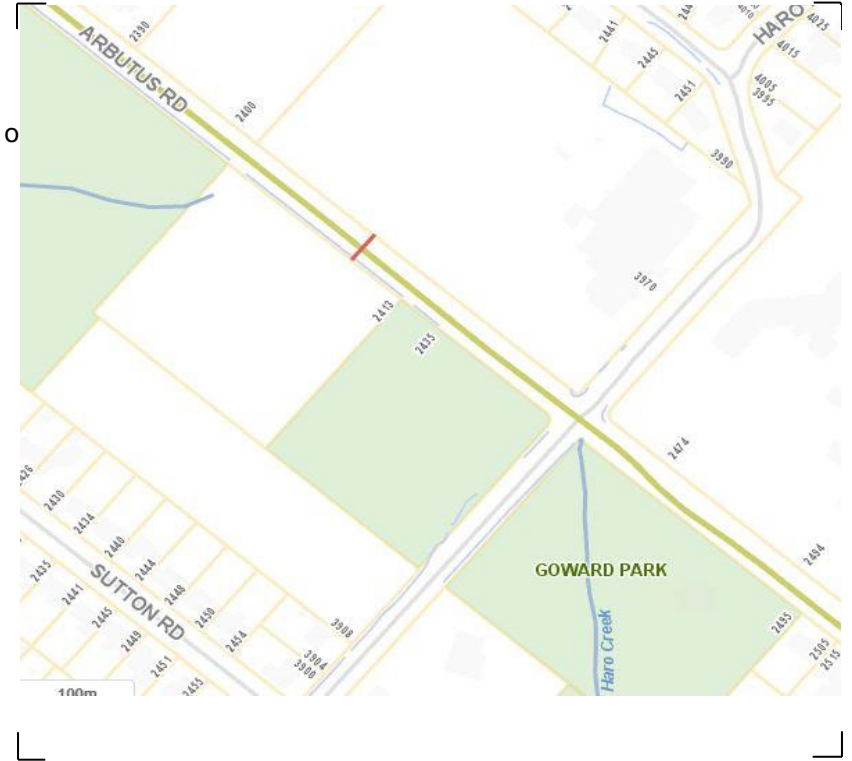
Direction: **North-South**

Dates: **March 03, 2020 To March 05, 2020**

Filtered data

AVG. SPEED	29 mph	46 km/h
50 % SPEED	29 mph	46 km/h
85 % SPEED	34 mph	55 km/h
95 % SPEED	38 mph	61 km/h

Location Map



Arbutus Rd between Finnerty Rd and Hobbs St

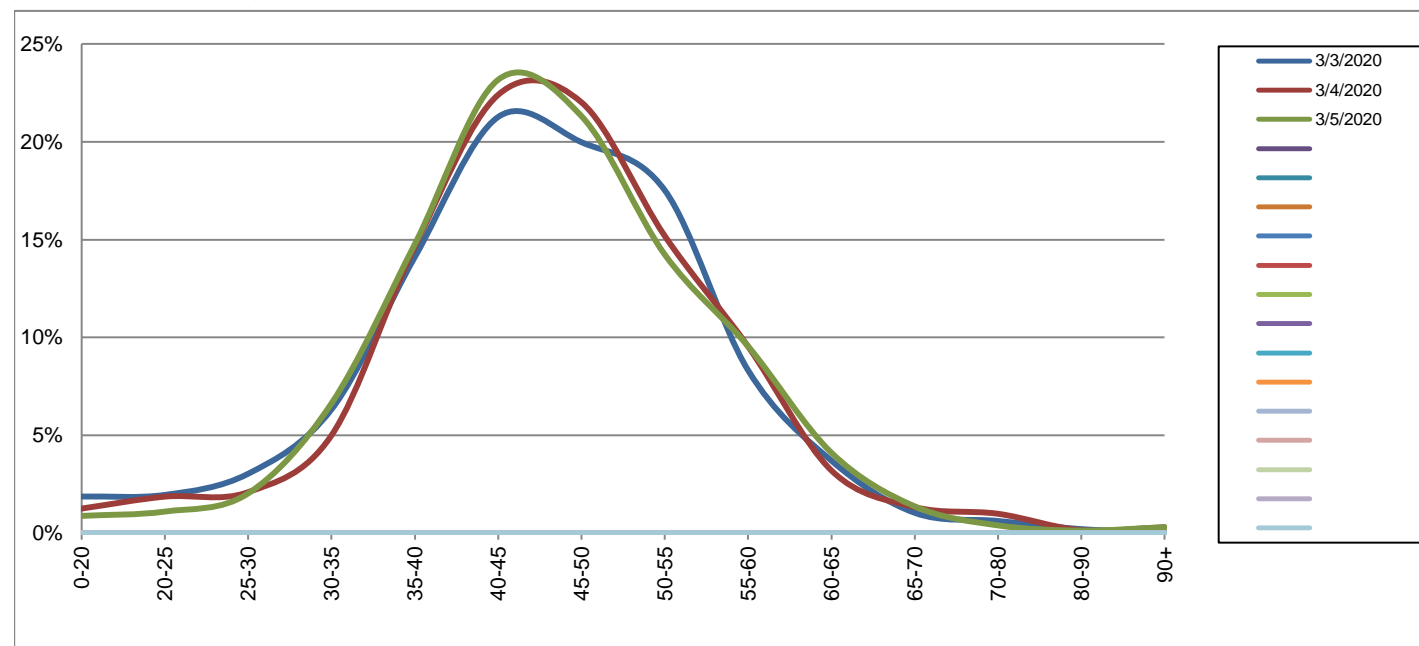
Northbound

March 3, 2020 to March 5, 2020

Daily Speed Bin Percentages															Daily Speed Bin Volumes														Total	Avg.
Bin #	1	2	3	4	5	6	7	8	9	10	11	12	13	14	1	2	3	4	5	6	7	8	9	10	11	12	13	14	Volume	Speed
Bin Speeds	0-20	20-25	25-30	30-35	35-40	40-45	45-50	50-55	55-60	60-65	65-70	70-80	80-90	90+	0-20	20-25	25-30	30-35	35-40	40-45	45-50	50-55	55-60	60-65	65-70	70-80	80-90	90+		
3/3/2020	1.9%	2.0%	3.0%	6.3%	14.1%	21.3%	20.0%	17.5%	8.3%	3.7%	1.0%	0.6%	0.2%	0.0%	45	47	73	152	339	511	480	421	200	89	25	15	5	1	2403	45
3/4/2020	1.3%	1.9%	2.1%	5.0%	14.7%	22.4%	22.0%	15.2%	9.5%	3.2%	1.3%	1.0%	0.2%	0.3%	33	49	55	131	384	587	577	398	250	84	35	26	4	8	2621	46
3/5/2020	0.9%	1.1%	2.0%	6.6%	14.8%	23.2%	21.3%	14.2%	9.5%	4.1%	1.4%	0.4%	0.1%	0.3%	20	25	46	150	334	524	482	322	216	93	31	9	3	7	2262	46
Total	1.3%	1.7%	2.4%	5.9%	14.5%	22.3%	21.1%	15.7%	9.1%	3.7%	1.2%	0.7%	0.2%	0.2%	98	121	174	433	1057	1622	1539	1141	666	266	91	50	12	16	7286	46

Speed Data Summary

Bin #	1	2	3	4	5	6	7	8	9	10	11	12	13	14	Total
Bin Speeds	0-20	20-25	25-30	30-35	35-40	40-45	45-50	50-55	55-60	60-65	65-70	70-80	80-90	90+	
Survey Total	98	121	174	433	1057	1622	1539	1141	666	266	91	50	12	16	7286
% Total	1.3%	1.7%	2.4%	5.9%	14.5%	22.3%	21.1%	15.7%	9.1%	3.7%	1.2%	0.7%	0.2%	0.2%	100%
Accumulated %	1.3%	3.0%	5.4%	11.3%	25.8%	48.1%	69.2%	84.9%	94.0%	97.7%	98.9%	99.6%	99.8%	100%	
Inverse Accum. %	98.7%	97.0%	94.6%	88.7%	74.2%	51.9%	30.8%	15.1%	6.0%	2.3%	1.1%	0.4%	0.2%	0.0%	
Average Speed	46 KM/H														



Site notes:

Arbutus Rd between Finnerty Rd and Hobbs St

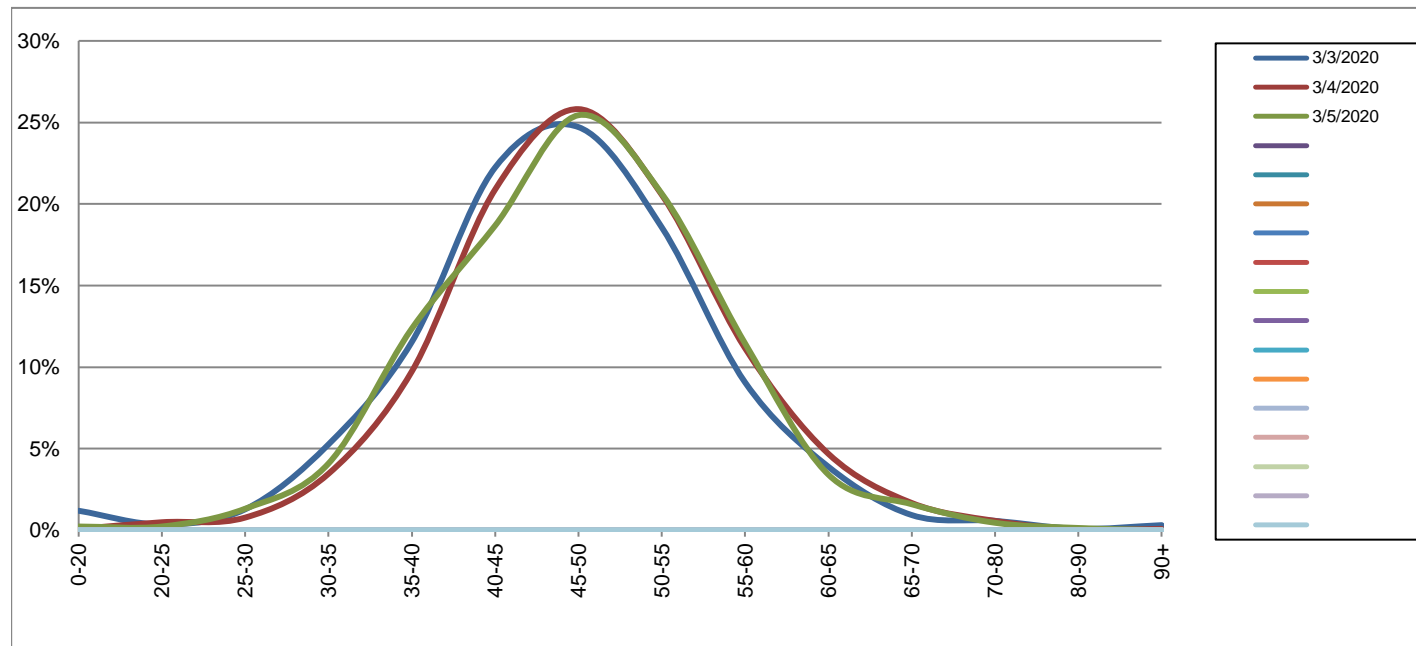
Southbound

March 3, 2020 to March 5, 2020

Daily Speed Bin Percentages															Daily Speed Bin Volumes														Total	Avg.
Bin #	1	2	3	4	5	6	7	8	9	10	11	12	13	14	1	2	3	4	5	6	7	8	9	10	11	12	13	14	Volume	Speed
Bin Speeds	0-20	20-25	25-30	30-35	35-40	40-45	45-50	50-55	55-60	60-65	65-70	70-80	80-90	90+	0-20	20-25	25-30	30-35	35-40	40-45	45-50	50-55	55-60	60-65	65-70	70-80	80-90	90+		
3/3/2020	1.2%	0.4%	1.3%	5.3%	11.5%	22.2%	24.7%	18.6%	9.1%	3.9%	0.9%	0.6%	0.1%	0.3%	27	8	29	119	261	503	559	420	205	88	21	13	2	7	2262	47
3/4/2020	0.1%	0.5%	0.8%	3.5%	9.7%	20.9%	25.8%	20.6%	11.2%	4.7%	1.7%	0.6%	0.0%	0.1%	2	12	19	85	239	513	634	505	274	115	41	14	1	2	2456	48
3/5/2020	0.2%	0.2%	1.3%	4.1%	12.4%	18.7%	25.4%	20.6%	11.4%	3.4%	1.6%	0.5%	0.1%	0.0%	5	5	29	90	272	411	560	454	252	75	35	10	3	0	2201	47
Total	0.5%	0.4%	1.1%	4.2%	11.2%	20.6%	25.3%	19.9%	10.6%	4.0%	1.4%	0.5%	0.1%	0.1%	34	25	77	294	772	1427	1753	1379	731	278	97	37	6	9	6919	47

Speed Data Summary

Bin #	1	2	3	4	5	6	7	8	9	10	11	12	13	14	Total
Bin Speeds	0-20	20-25	25-30	30-35	35-40	40-45	45-50	50-55	55-60	60-65	65-70	70-80	80-90	90+	
Survey Total	34	25	77	294	772	1427	1753	1379	731	278	97	37	6	9	6919
% Total	0.5%	0.4%	1.1%	4.2%	11.2%	20.6%	25.3%	19.9%	10.6%	4.0%	1.4%	0.5%	0.1%	0.1%	100%
Accumulated %	0.5%	0.9%	2.0%	6.2%	17.4%	38.0%	63.3%	83.3%	93.8%	97.8%	99.2%	99.8%	99.9%	100%	
Inverse Accum. %	99.5%	99.1%	98.0%	93.8%	82.6%	62.0%	36.7%	16.7%	6.2%	2.2%	0.8%	0.2%	0.1%	0.0%	
Average Speed	47 KM/H														



Site notes:

Arbutus Rd between Finnerty Rd and Hobbs St

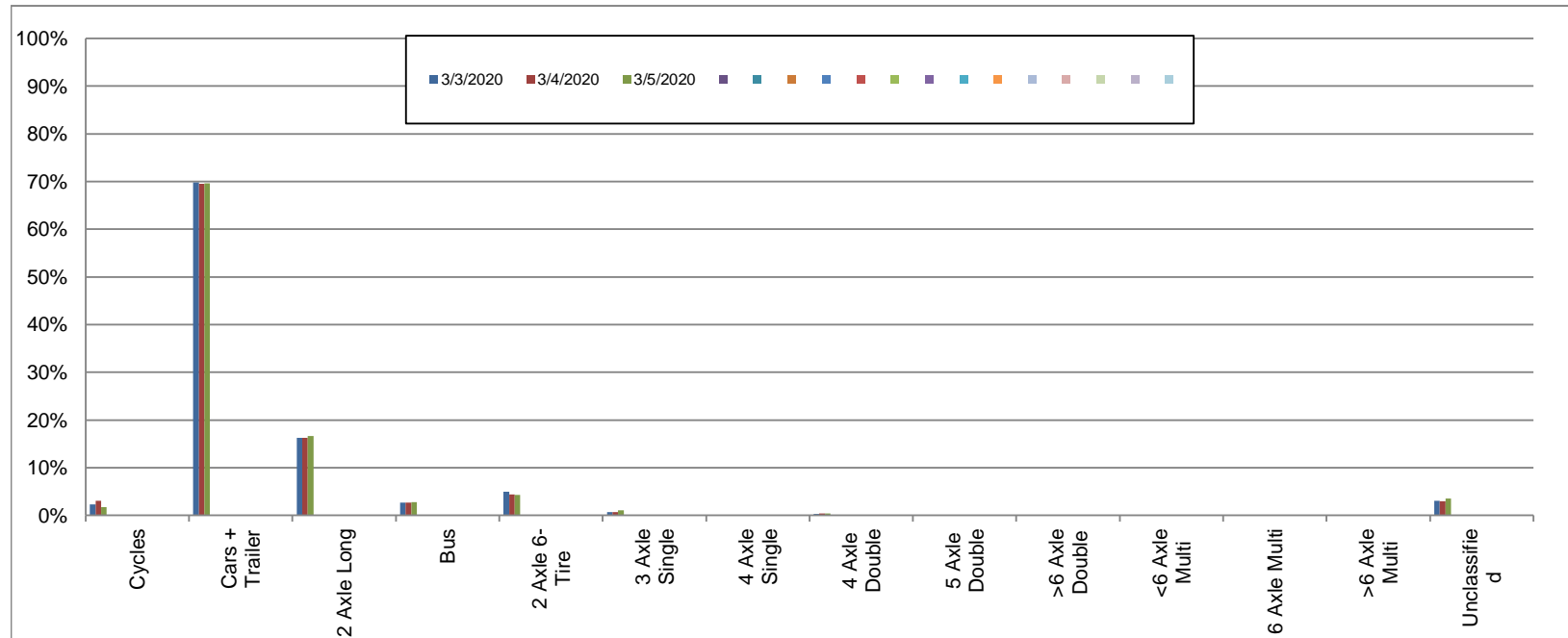
Northbound

March 3, 2020 to March 5, 2020

Daily Class Bin Percentages															Daily Class Bin Volumes															
Bin #	1	2	3	4	5	6	7	8	9	10	11	12	13	14	1	2	3	4	5	6	7	8	9	10	11	12	13	14	Total Volume	
Bin Class	Cycles	Cars + Trailer	2 Axle Long	Bus	2 Axle 6-Tire	3 Axle Single	4 Axle Single	4 Axle Double	5 Axle Double	>6 Axle Double	<6 Axle Multi	6 Axle Multi	>6 Axle Multi	Unclassified	Cycles	Cars + Trailer	2 Axle Long	Bus	2 Axle 6-Tire	3 Axle Single	4 Axle Single	4 Axle Double	5 Axle Double	>6 Axle Double	<6 Axle Multi	6 Axle Multi	>6 Axle Multi	Unclassified		
3/3/2020	2.3%	69.8%	16.2%	2.7%	5.0%	0.7%	0.0%	0.3%	0.0%	0.0%	0.0%	0.0%	0.0%	3.0%	56	1677	390	64	119	16	0	8	0	0	0	0	0	0	73	2403
3/4/2020	3.1%	69.6%	16.3%	2.6%	4.4%	0.7%	0.0%	0.4%	0.0%	0.0%	0.0%	0.0%	0.0%	2.9%	80	1823	427	69	115	18	1	10	1	0	0	0	0	0	77	2621
3/5/2020	1.8%	69.6%	16.7%	2.7%	4.2%	1.0%	0.0%	0.4%	0.0%	0.0%	0.0%	0.0%	0.0%	3.5%	40	1575	377	62	96	23	1	9	0	0	0	0	0	0	79	2262
Total	2.4%	69.7%	16.4%	2.7%	4.5%	0.8%	0.0%	0.4%	0.0%	0.0%	0.0%	0.0%	0.0%	3.1%	176	5075	1194	195	330	57	2	27	1	0	0	0	0	229	7286	

Class Data Summary

Bin #	1	2	3	4	5	6	7	8	9	10	11	12	13	14	Total Volume
Bin Class	Cycles	Cars + Trailer	2 Axle Long	Bus	2 Axle 6-Tire	3 Axle Single	4 Axle Single	4 Axle Double	5 Axle Double	>6 Axle Double	<6 Axle Multi	6 Axle Multi	>6 Axle Multi	Unclassified	Total Volume
Survey Total	176	5075	1194	195	330	57	2	27	1	0	0	0	0	229	7286
% Total	2.4%	69.7%	16.4%	2.7%	4.5%	0.8%	0.0%	0.4%	0.0%	0.0%	0.0%	0.0%	0.0%	3.1%	100%
Accumulated %	2.4%	72.1%	88.5%	91.1%	95.7%	96.4%	96.5%	96.8%	96.9%	96.9%	96.9%	96.9%	96.9%	100.0%	
Inv. Accum. %	97.6%	27.9%	11.5%	8.9%	4.3%	3.6%	3.5%	3.2%	3.1%	3.1%	3.1%	3.1%	3.1%	0.0%	



Classification Descriptions

Bin #	Bin Description
1	Motorcycles
2	Passenger cars, including those with recreational trailers
3	2-axle pick-ups, vans, and RVs, including those with recreational trailers
4	Buses
5	2-axle, 6-tire single units
6	3-axle single units
7	4-axle single units
8	3-axle or 4-axle double unit
9	5-axle double unit
10	6-, 7-, or 8-axle double unit
11	5-axle multiple unit
12	6-axle multiple unit
13	7-or-more-axle multiple unit
14	Vehicles that could not be classified

Site notes:

Arbutus Rd between Finnerty Rd and Hobbs St

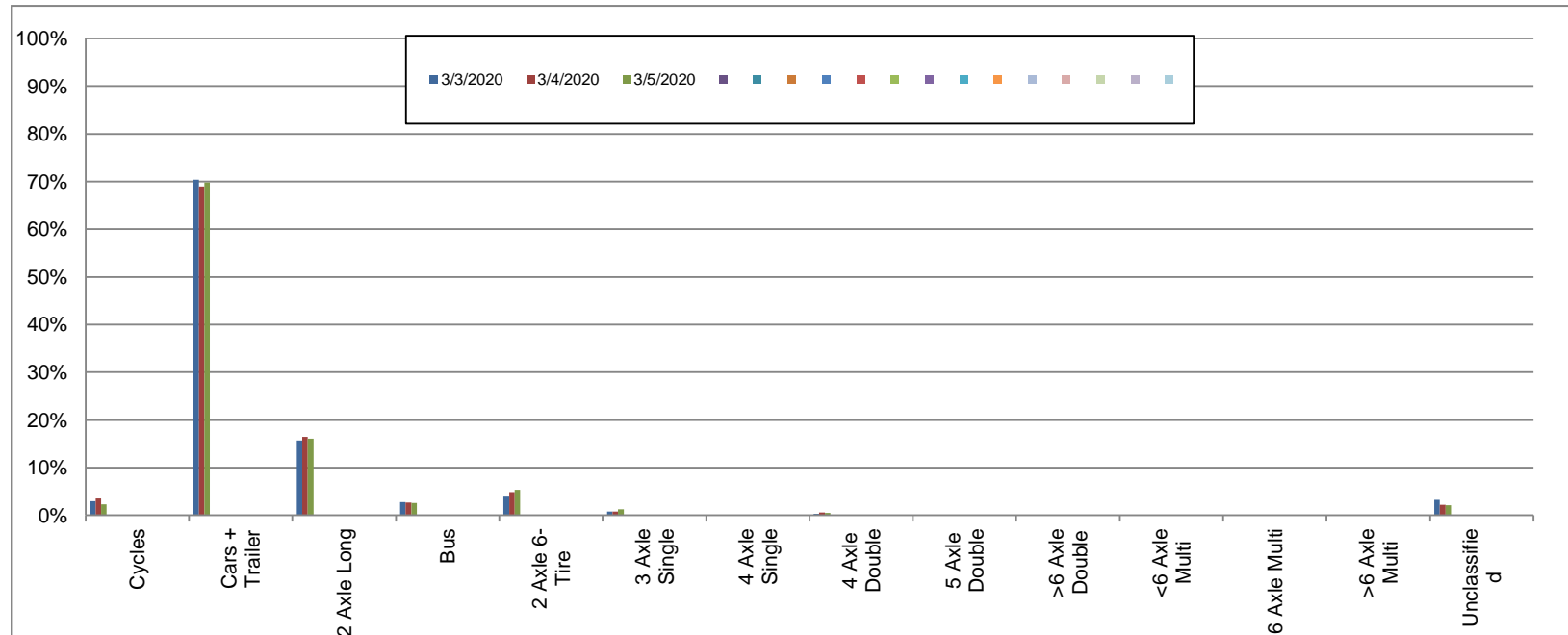
Southbound

March 3, 2020 to March 5, 2020

Daily Class Bin Percentages															Daily Class Bin Volumes															
Bin #	1	2	3	4	5	6	7	8	9	10	11	12	13	14	1	2	3	4	5	6	7	8	9	10	11	12	13	14	Total Volume	
Bin Class	Cycles	Cars + Trailer	2 Axle Long	Bus	2 Axle 6-Tire	3 Axle Single	4 Axle Single	4 Axle Double	5 Axle Double	>6 Axle Double	<6 Axle Multi	6 Axle Multi	>6 Axle Multi	Unclassified	Cycles	Cars + Trailer	2 Axle Long	Bus	2 Axle 6-Tire	3 Axle Single	4 Axle Single	4 Axle Double	5 Axle Double	>6 Axle Double	<6 Axle Multi	6 Axle Multi	>6 Axle Multi	Unclassified		
3/3/2020	3.0%	70.3%	15.6%	2.8%	3.9%	0.8%	0.0%	0.3%	0.0%	0.0%	0.0%	0.0%	0.0%	3.3%	68	1591	354	63	88	18	0	6	0	0	0	0	0	0	74	2262
3/4/2020	3.5%	68.9%	16.4%	2.7%	4.8%	0.7%	0.0%	0.6%	0.0%	0.0%	0.0%	0.0%	0.0%	2.2%	87	1693	404	66	119	18	1	14	1	0	0	0	0	0	53	2456
3/5/2020	2.3%	69.8%	16.1%	2.6%	5.3%	1.2%	0.0%	0.5%	0.0%	0.0%	0.0%	0.0%	0.0%	2.1%	50	1537	354	57	117	27	1	11	0	0	0	0	0	0	47	2201
Total	3.0%	69.7%	16.1%	2.7%	4.7%	0.9%	0.0%	0.4%	0.0%	0.0%	0.0%	0.0%	0.0%	2.5%	205	4821	1112	186	324	63	2	31	1	0	0	0	0	174	6919	

Class Data Summary

Bin #	1	2	3	4	5	6	7	8	9	10	11	12	13	14	Total Volume
Bin Class	Cycles	Cars + Trailer	2 Axle Long	Bus	2 Axle 6-Tire	3 Axle Single	4 Axle Single	4 Axle Double	5 Axle Double	>6 Axle Double	<6 Axle Multi	6 Axle Multi	>6 Axle Multi	Unclassified	Total Volume
Survey Total	205	4821	1112	186	324	63	2	31	1	0	0	0	0	174	6919
% Total	3.0%	69.7%	16.1%	2.7%	4.7%	0.9%	0.0%	0.4%	0.0%	0.0%	0.0%	0.0%	0.0%	2.5%	100%
Accumulated %	3.0%	72.6%	88.7%	91.4%	96.1%	97.0%	97.0%	97.5%	97.5%	97.5%	97.5%	97.5%	97.5%	100.0%	
Inv. Accum. %	97.0%	27.4%	11.3%	8.6%	3.9%	3.0%	3.0%	2.5%	2.5%	2.5%	2.5%	2.5%	2.5%	0.0%	



Classification Descriptions

Bin #	Bin Description
1	Motorcycles
2	Passenger cars, including those with recreational trailers
3	2-axle pick-ups, vans, and RVs, including those with recreational trailers
4	Buses
5	2-axle, 6-tire single units
6	3-axle single units
7	4-axle single units
8	3-axle or 4-axle double unit
9	5-axle double unit
10	6-, 7-, or 8-axle double unit
11	5-axle multiple unit
12	6-axle multiple unit
13	7-or-more-axle multiple unit
14	Vehicles that could not be classified

Site notes: